



ALAMEDA COUNTY TRANSPORTATION COMMISSION

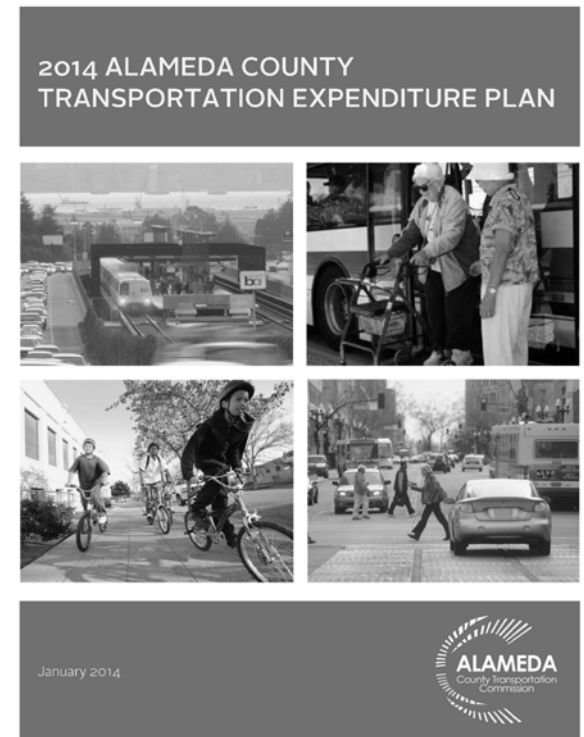
Transportation Solutions: 2014 Transportation Expenditure Plan



A presentation to the City of Berkeley
Arthur L. Dao, Alameda CTC Executive Director
March 11, 2014

Expenditure Plan Overview

- Alameda CTC seeks your approval of the 2014 Transportation Expenditure Plan
 - 30-year, \$8 billion investment in transportation
- 2014 Plan includes major investments for City of Berkeley



Transportation Funding Needed for Alameda County

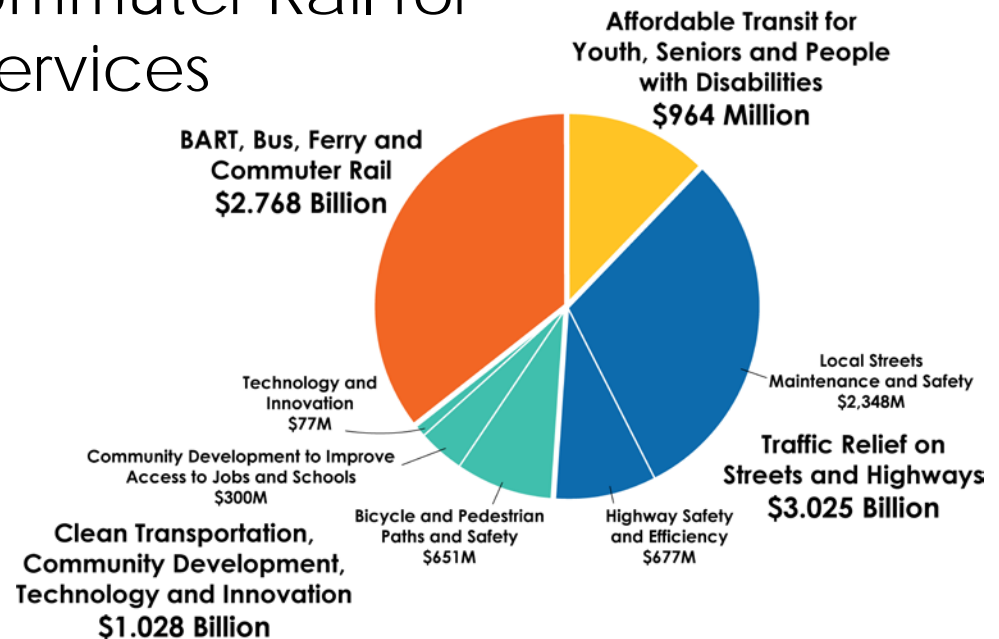
3

- Projected population growth of 30% in Alameda County
- Senior population will double
- Decreased funding has resulted in service cuts
- Freeway delays increased by 23% in 2013
- Increasing demand on existing roads and transit systems
- Economic downturn affected jobs in Alameda County



2014 Plan Investments

- BART, Bus, Ferry and Commuter Rail for reliable, safe and fast services
- Affordable Transit for Youth, Seniors and People with Disabilities
- Traffic Relief on Streets and Highways
- Clean Transportation, Community Development, Technology and Innovation
- Investments that create good jobs



Continued transportation funding for:

	Estimated Revenue First Year of 2014 Measure (FY14-15)			Total 2014 Plan Funding 2015-2045
	Current Funding (FY13-14)	Current and 2014 Plan Investments	Percentage Increase	
Local streets maintenance and safety	\$2,620,000	\$5,040,000	92%	\$161,870,000
Bicycle and pedestrian paths and safety	\$320,000	\$580,000	81%	\$17,510,000
Paratransit for seniors and people with disabilities*	\$250,000	\$510,000	104%	\$17,570,000
			TOTAL:	\$196,950,000

* The current value is based on an adopted FY13-14 formula. The 2014 Plan value is based on the population over age 70 in Alameda County's four planning areas.

BART

- BART expansion and modernization

Bus

- AC Transit — double the funding to increase and restore services
- AC Transit rapid transit projects on Grand Avenue/MacArthur Boulevard and East 14th Street/International Boulevard
- College Avenue transit improvement projects

Affordable Senior and Youth Transportation

- Affordable student transit pass program and Safe Routes to Schools
- Affordable and accessible transit for seniors and people with disabilities

Traffic Relief

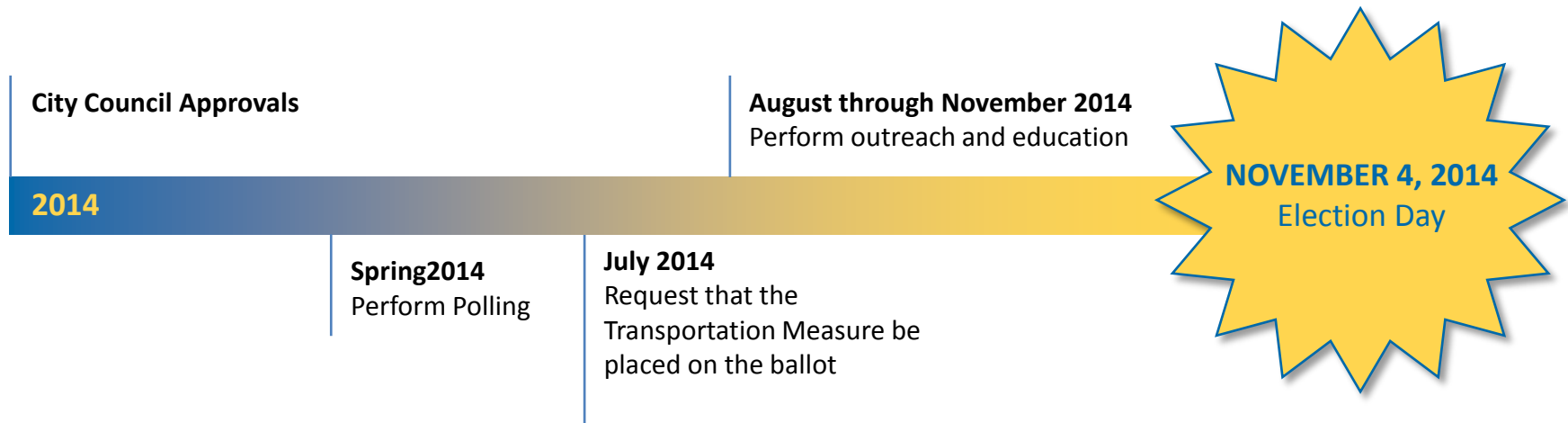
- Gilman Street and Ashby Avenue interchange improvements
- Improvements on major commute corridors such as Ashby Avenue, San Pablo Avenue and Gilman Street
- Improvements on major countywide freight corridors such as truck routes serving the Port of Oakland

Community Development and Clean Transportation

- Bay Trail and East Bay Greenway bicycle and pedestrian paths
- Community development investments that improve transit connection to jobs, schools and housing
- Commuter rail service enhancements (Capitol Corridor)
- Operations and maintenance funding for ferry services

Recommendation: Approve and support 2014 Transportation Expenditure Plan

Now through July 2014: Alameda CTC seeks approval of the new plan by Alameda County city councils and the Board of Supervisors



Questions?