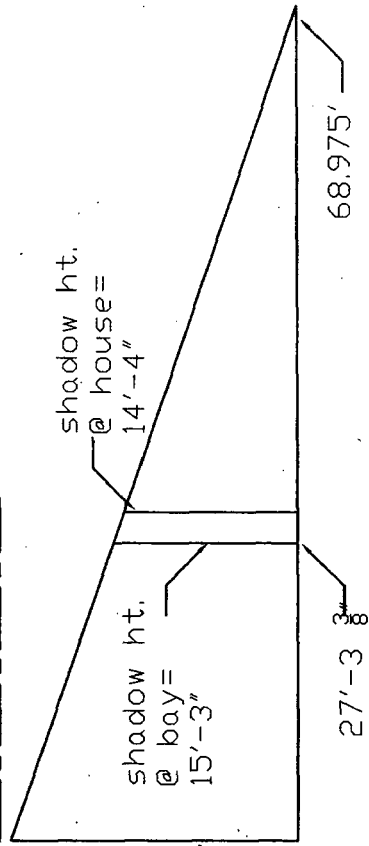
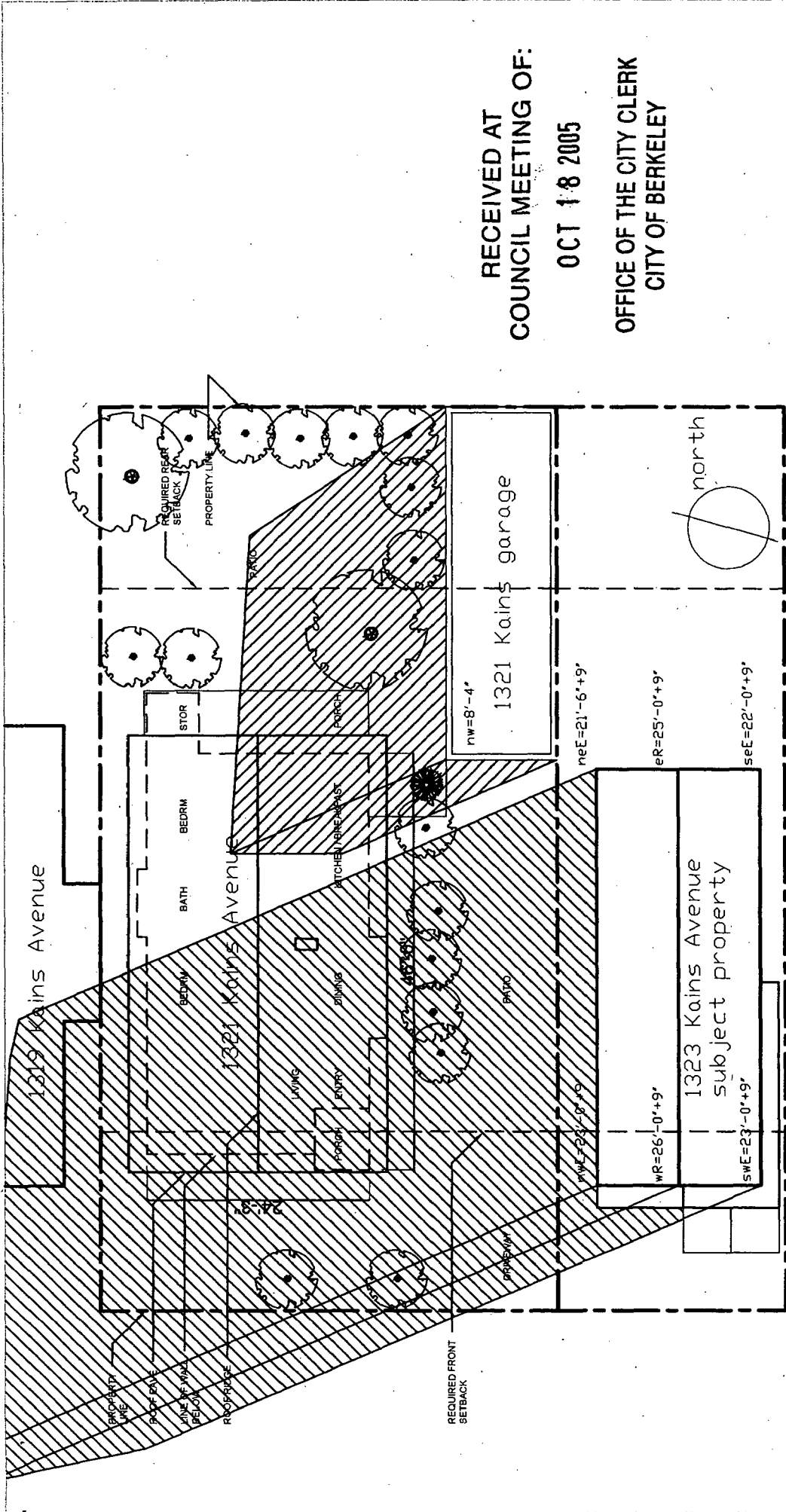


26

RECEIVED AT
COUNCIL MEETING OF:

OCT 18 2005

OFFICE OF THE CITY CLERK
CITY OF BERKELEY

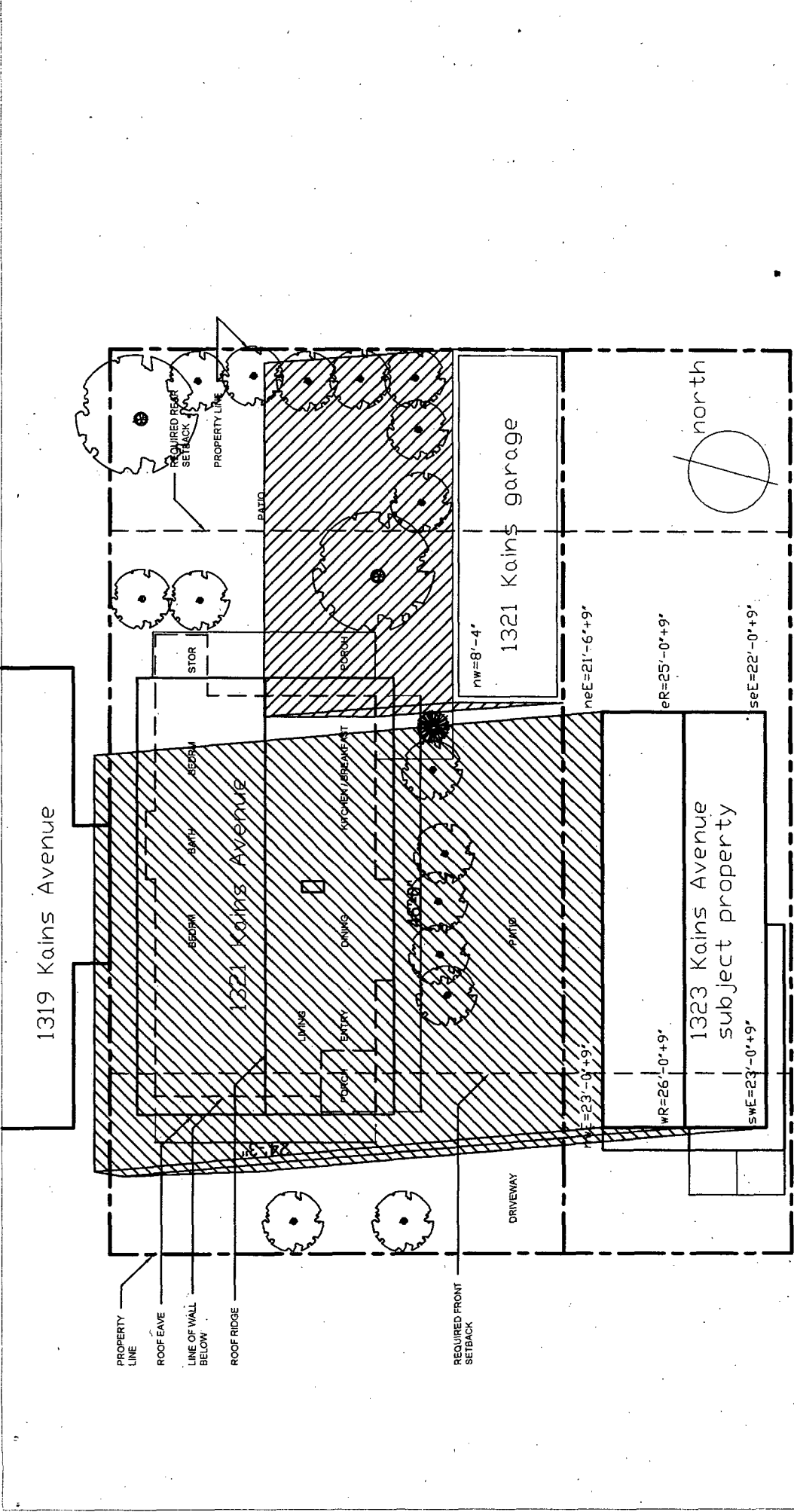


Dec 21st 2 hours after sunrise

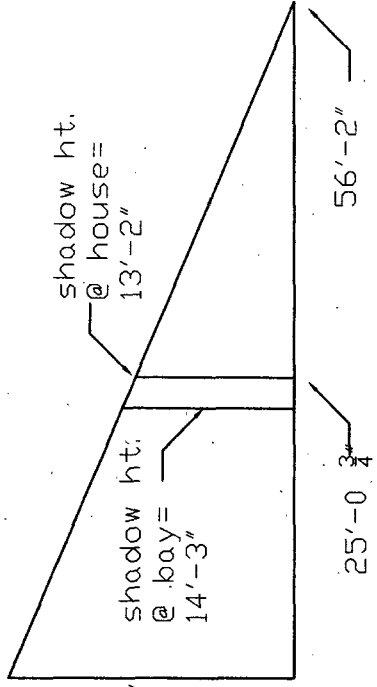
nW shadow intersects house at 27'-3 3/8"

nW= 23'-9"

Typical head height of windows is 60" (6'-8") above finished floor of house.
 Typical height of windows is 107" (8'-11") above finished grade (grade varies).

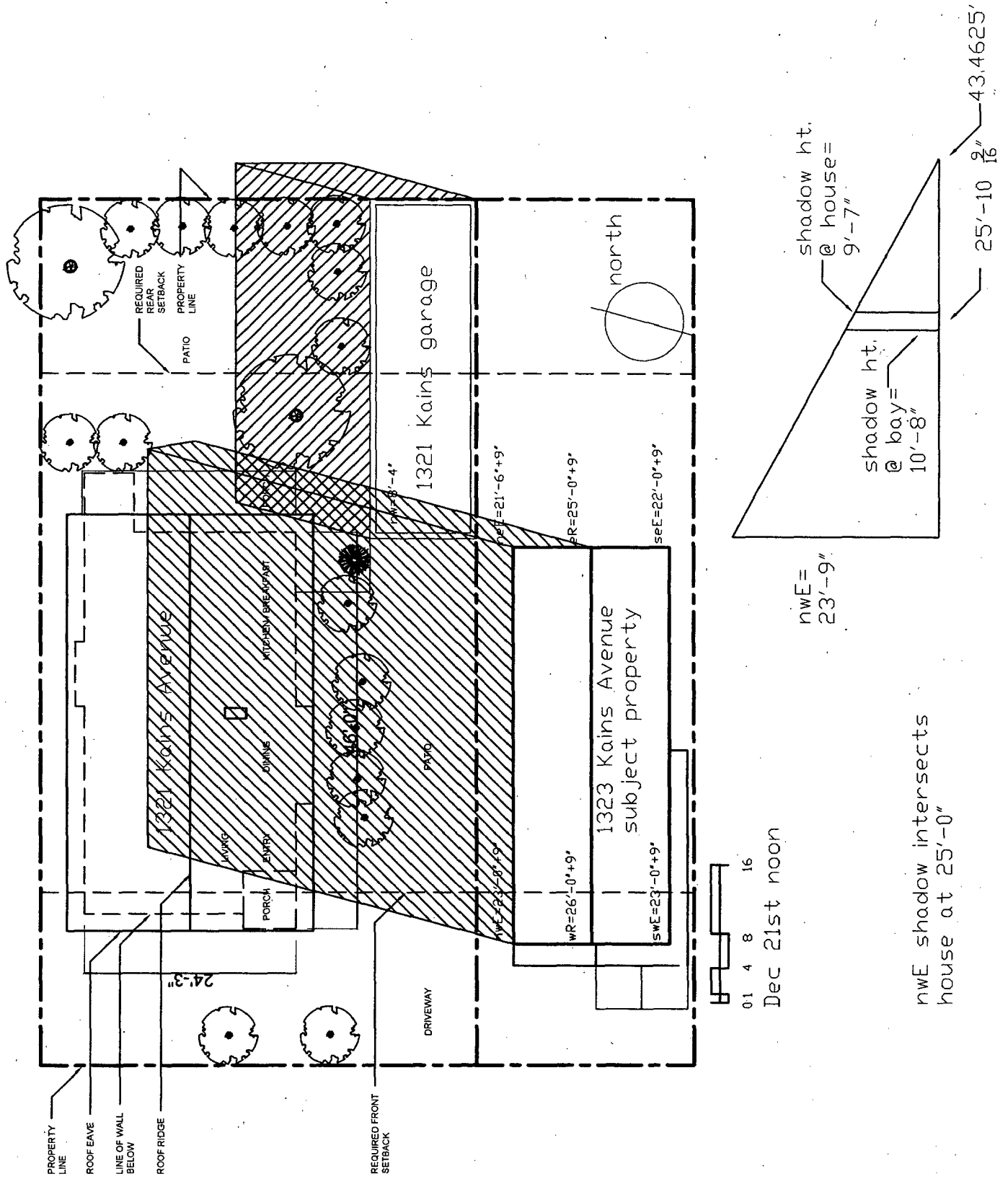


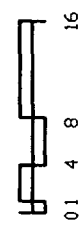
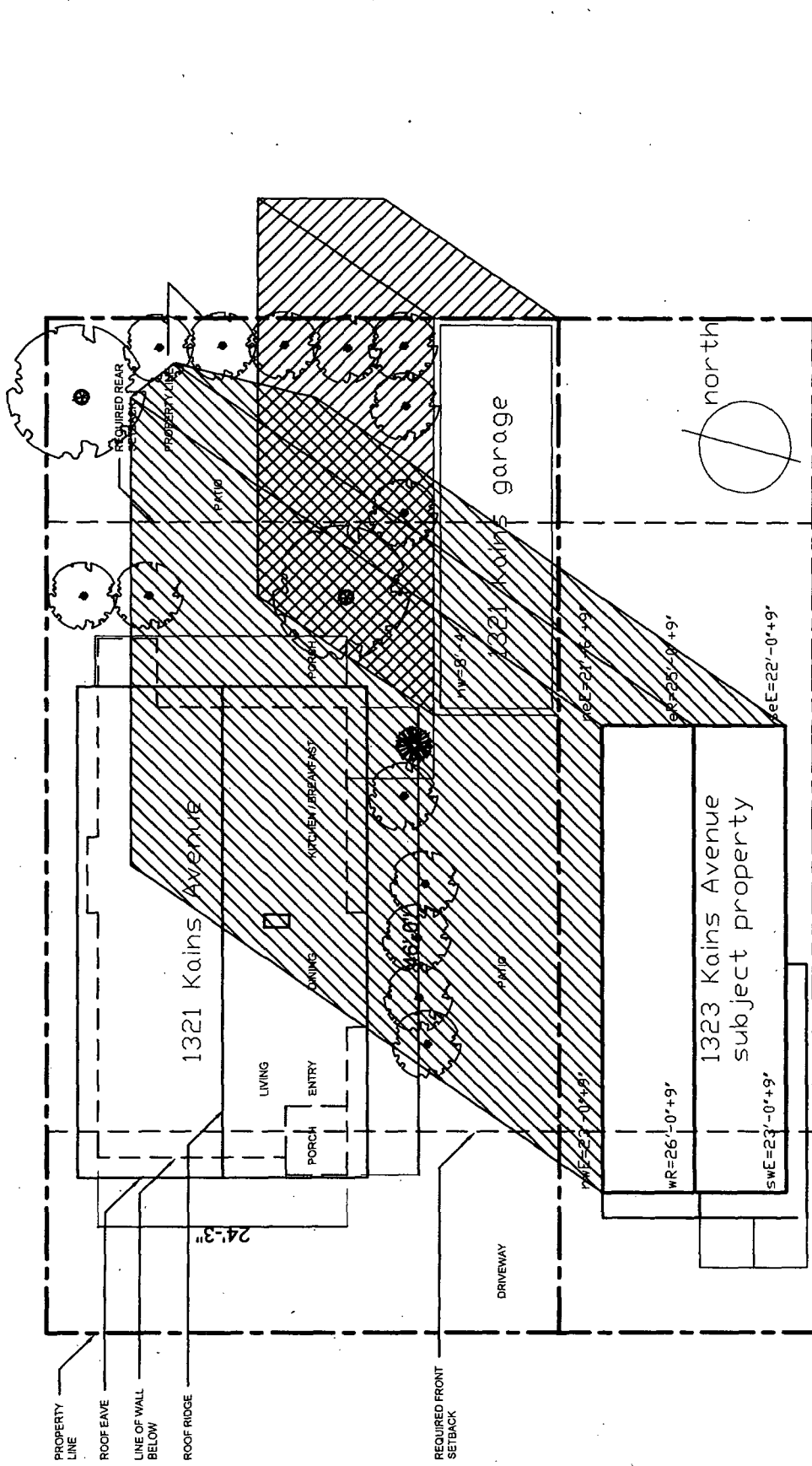
Dec 21st midmorning



nWE= 23'-9"

nWE shadow intersects house at 25'-0 3/4"

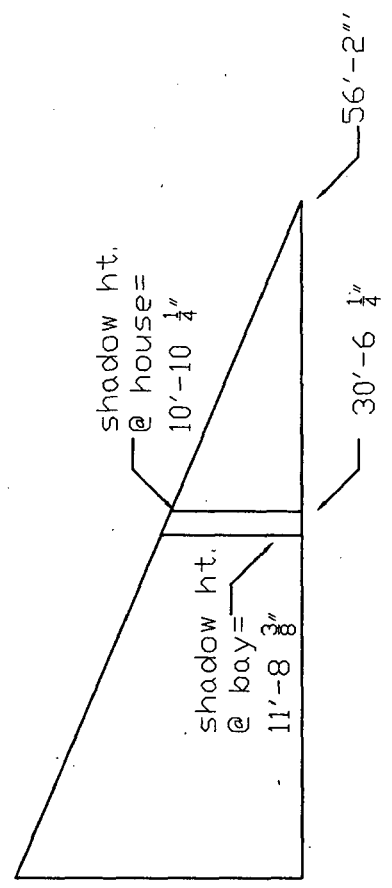


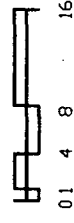
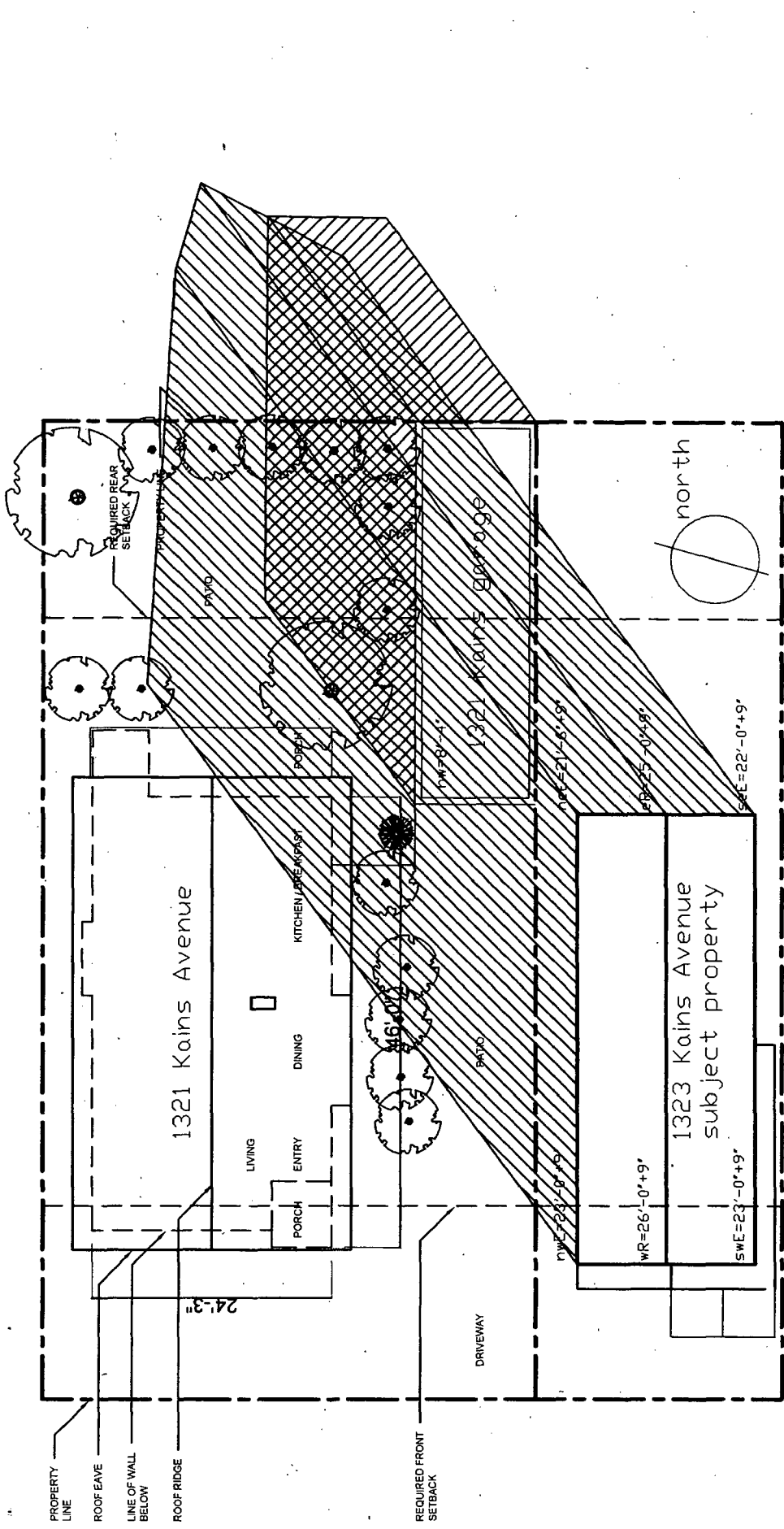


Dec 21st mid-afternoon

nWE= 23'-9"

nWE shadow intersects house at 30'-6 1/4"



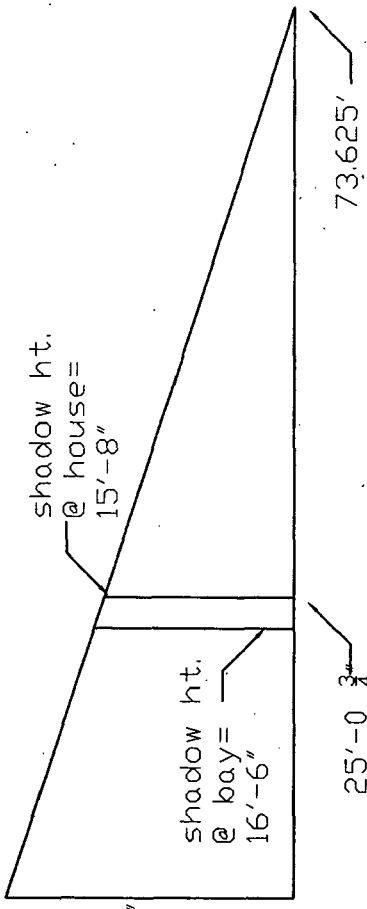


Dec 21st 2 hours before sunset

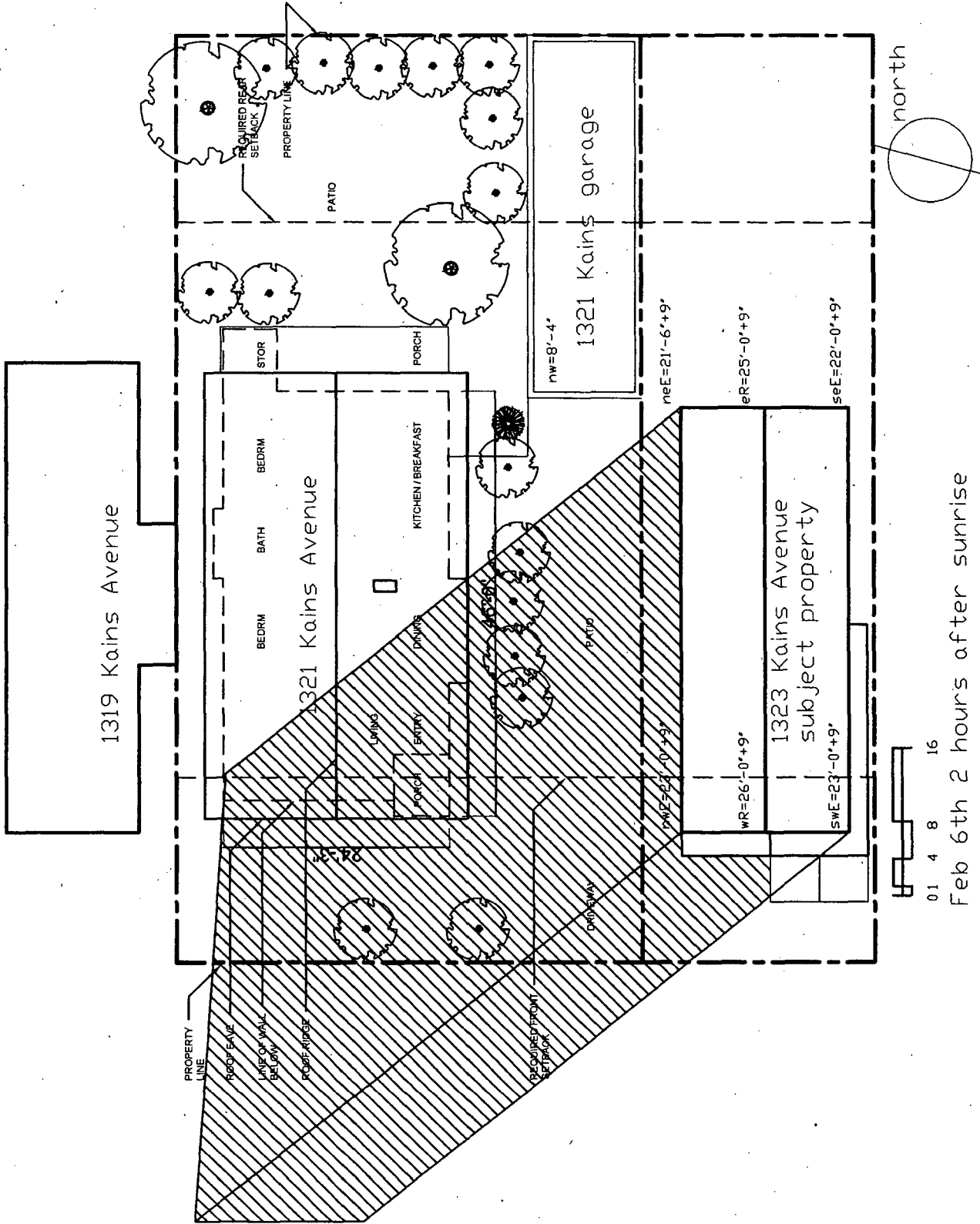
nWE= 23'-9"

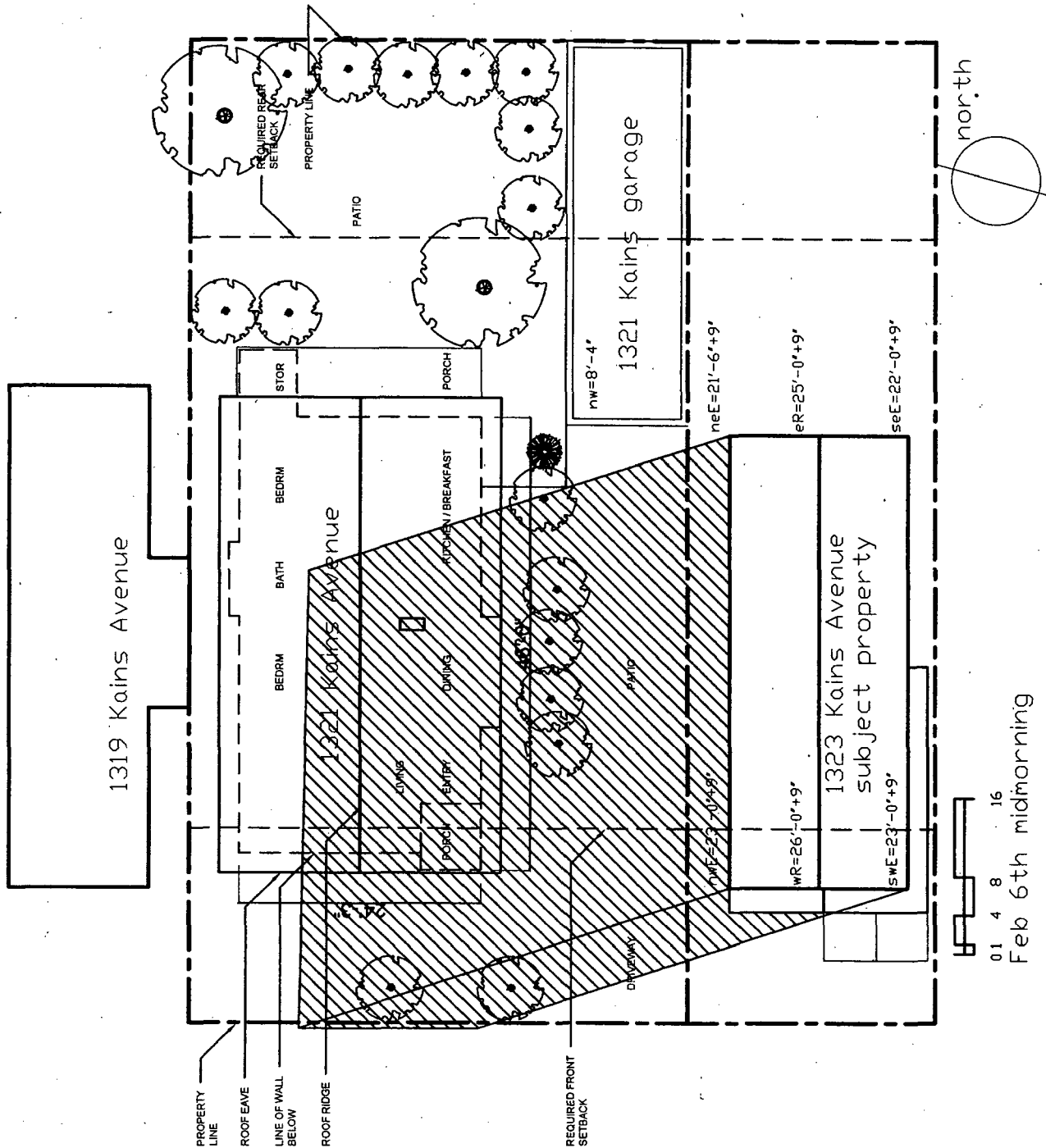
nWE shadow intersects bay on house at 29'-5"

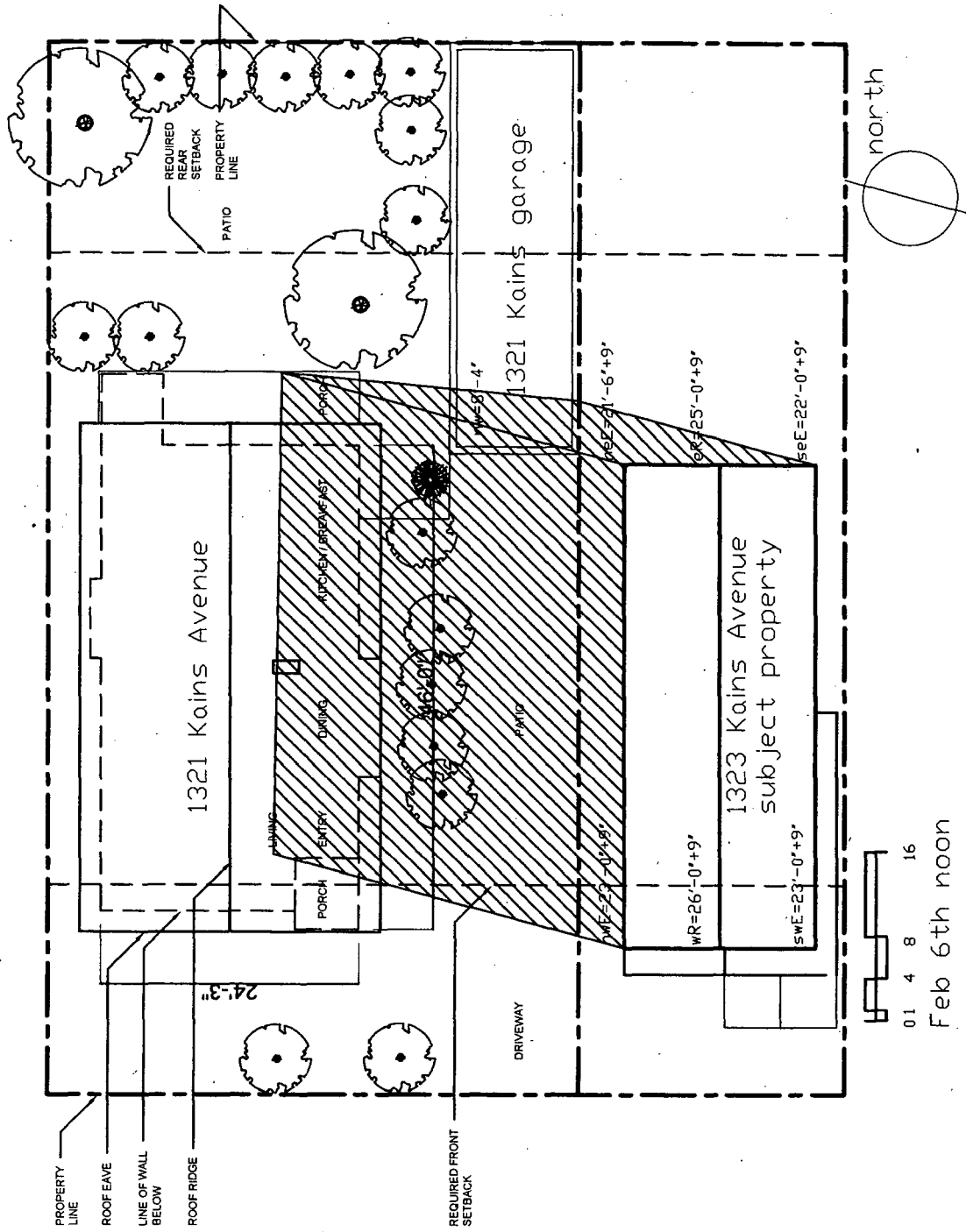
nWE shadow intersects house at 32'-0"

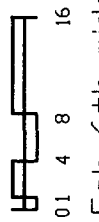
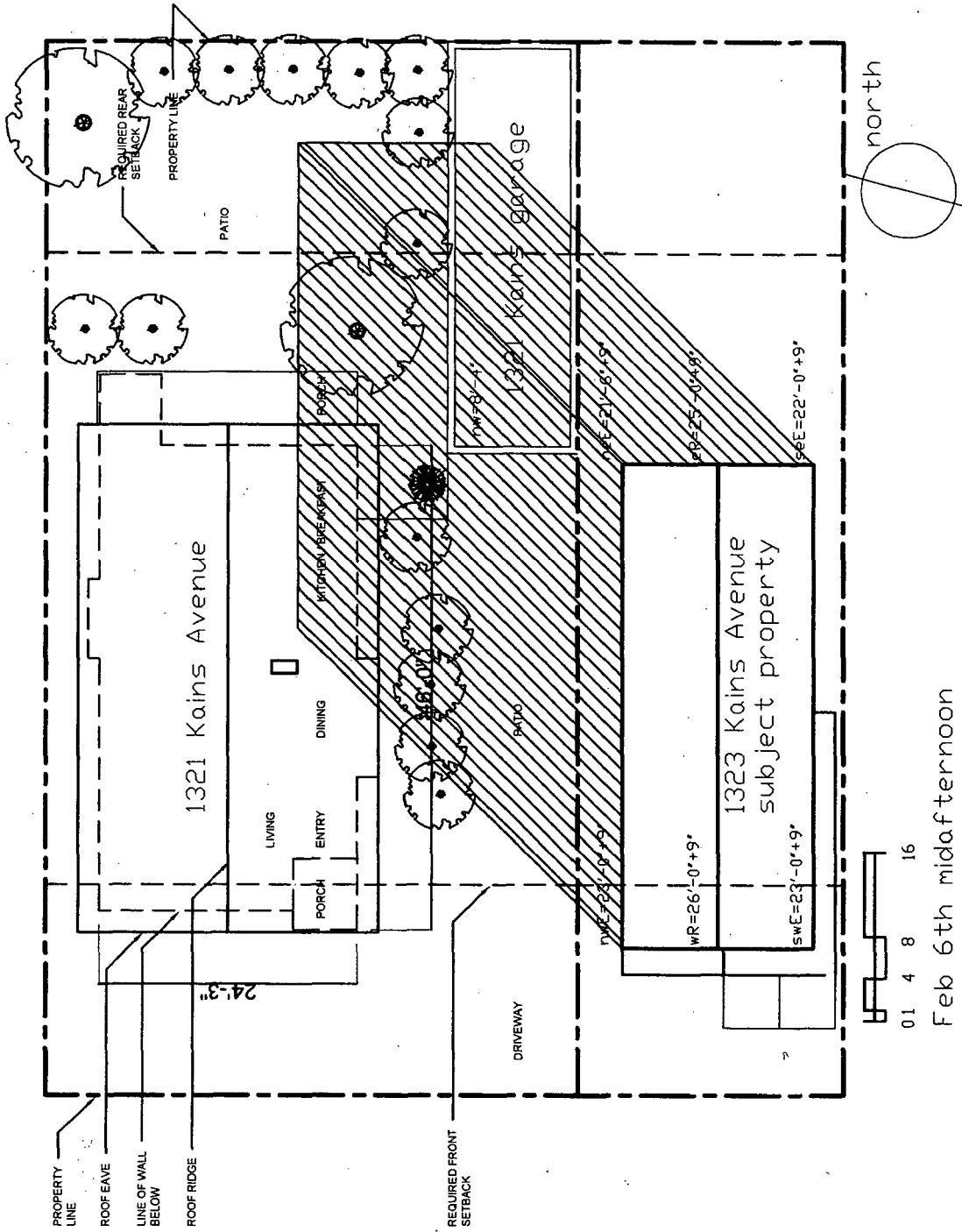


Typical head height of windows is 60" (6'-8") above finished floor of house.
 Typical height of windows is 107" (8'-11") above finished grade (grade varies).

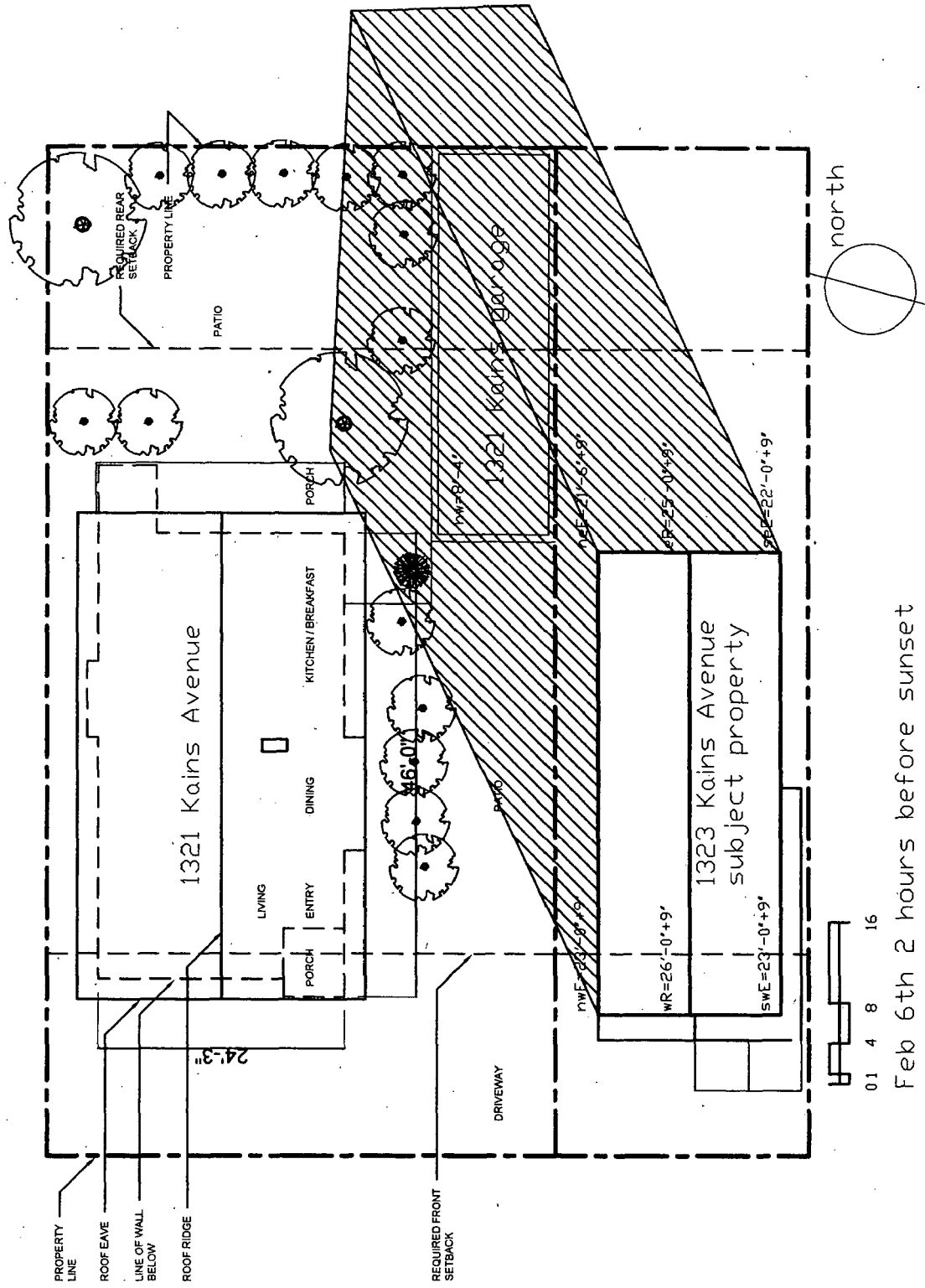




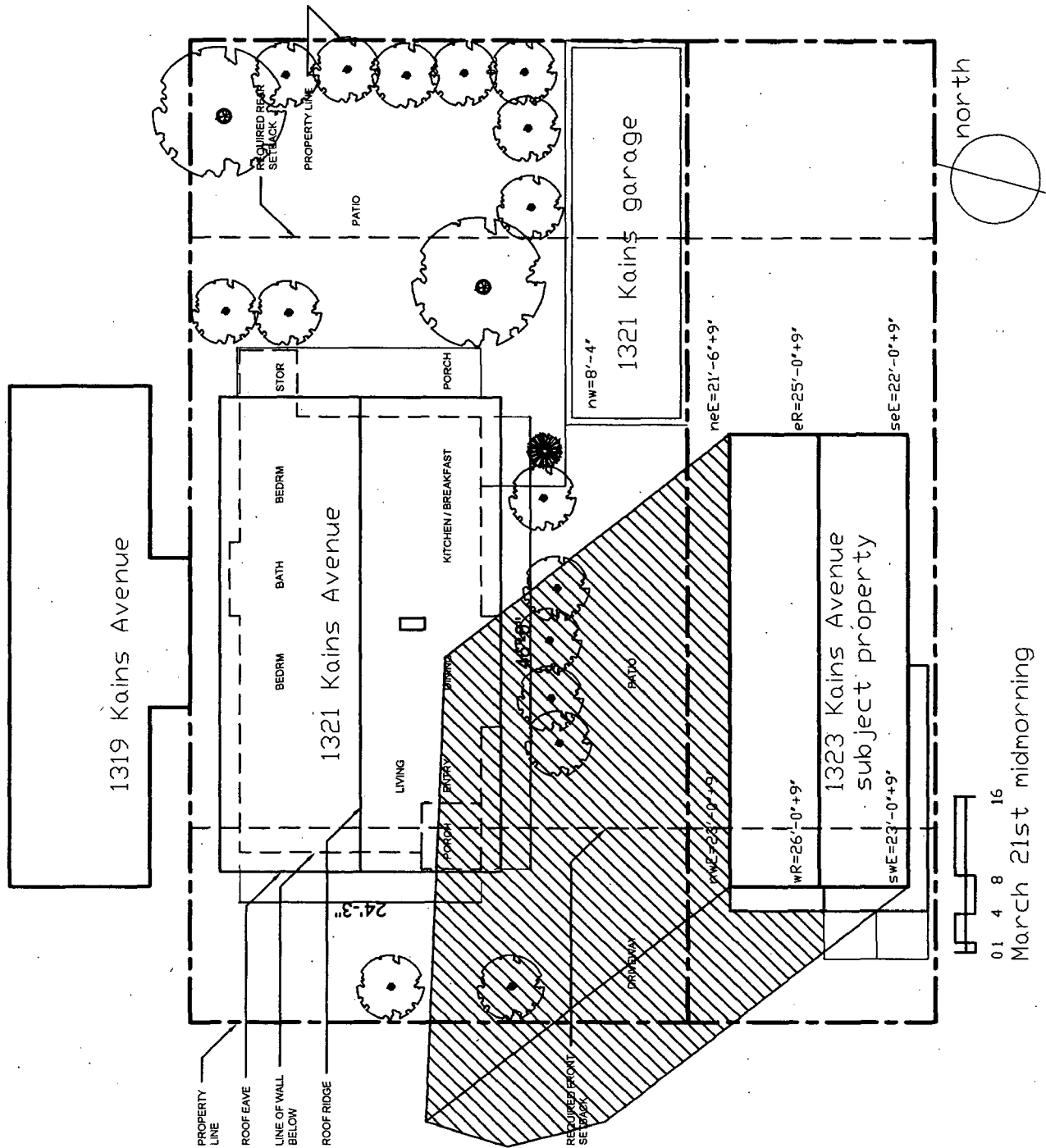




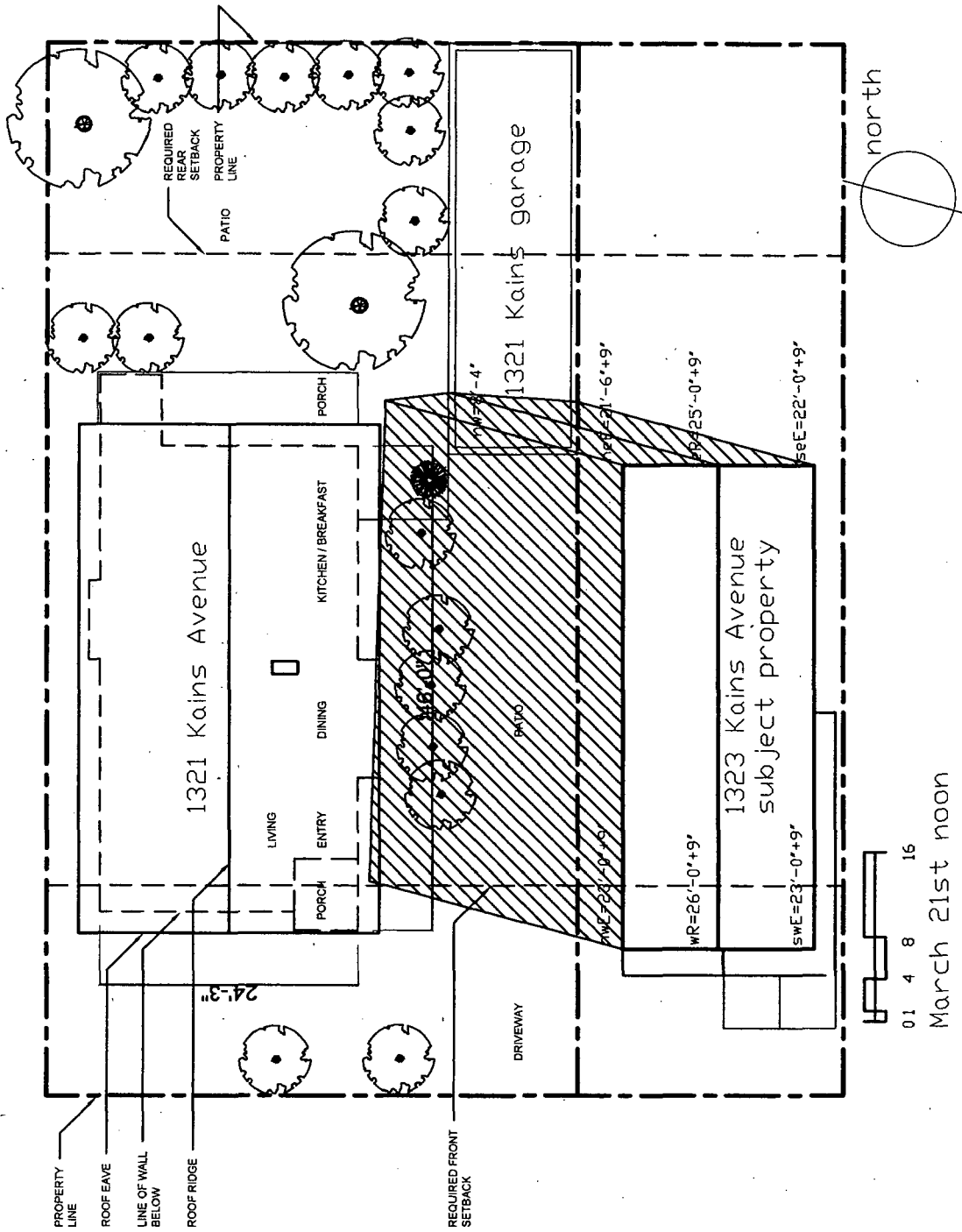
Feb 6th midafternoon

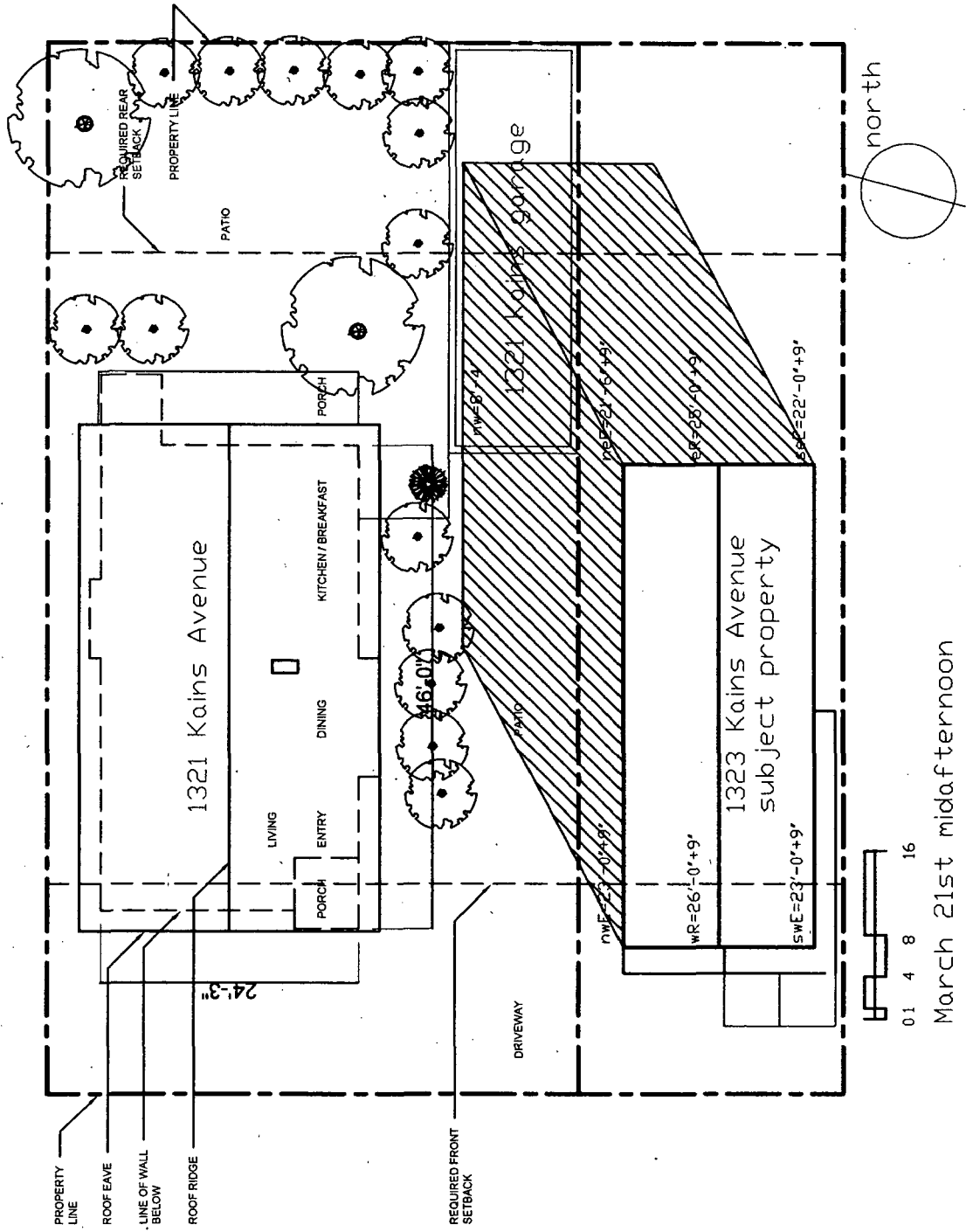


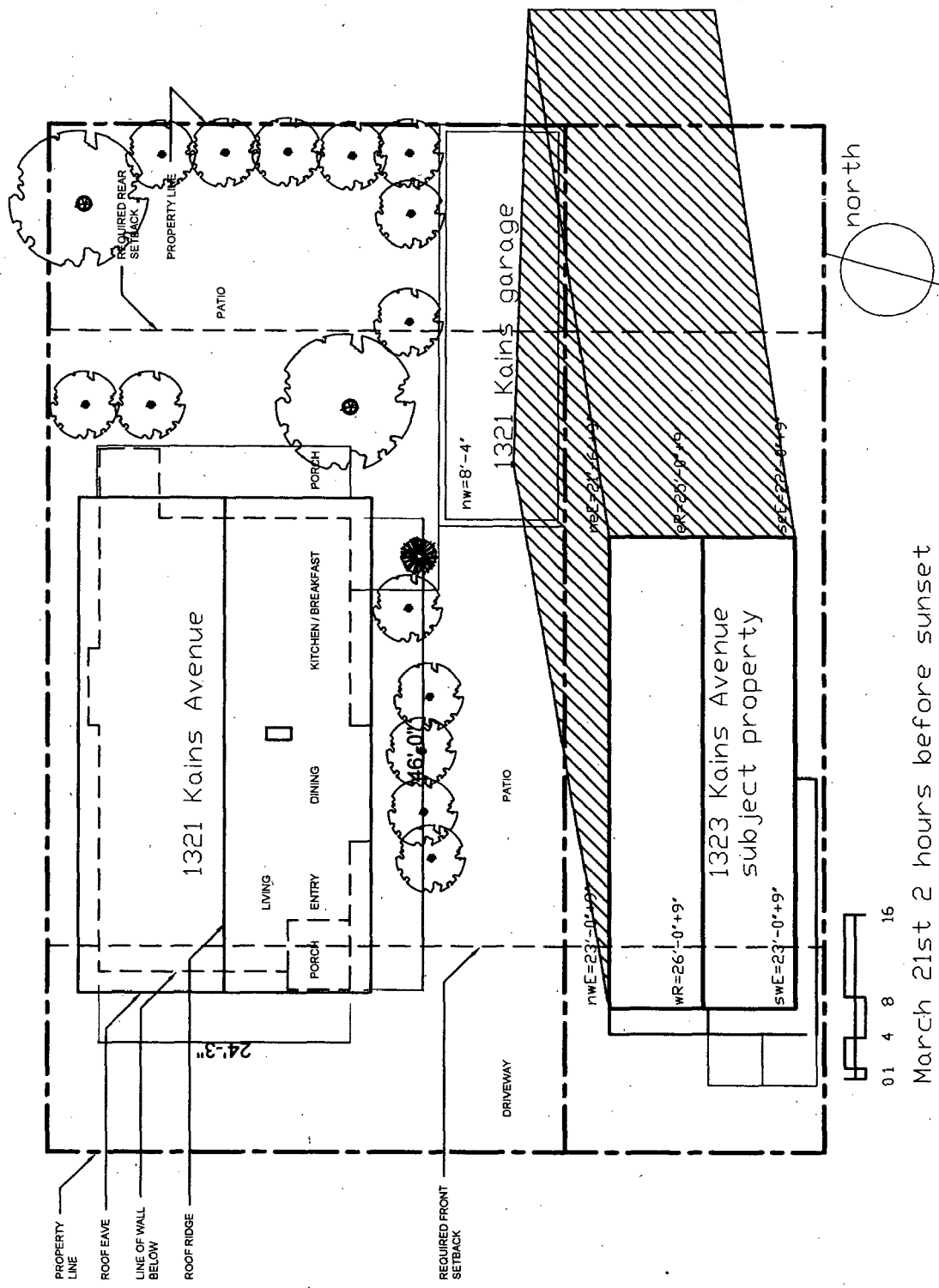
Shadow Study
 prepared by Laura Riggs October 15, 2005



Shadow Study
 prepared by Laura Riggs October 15, 2005

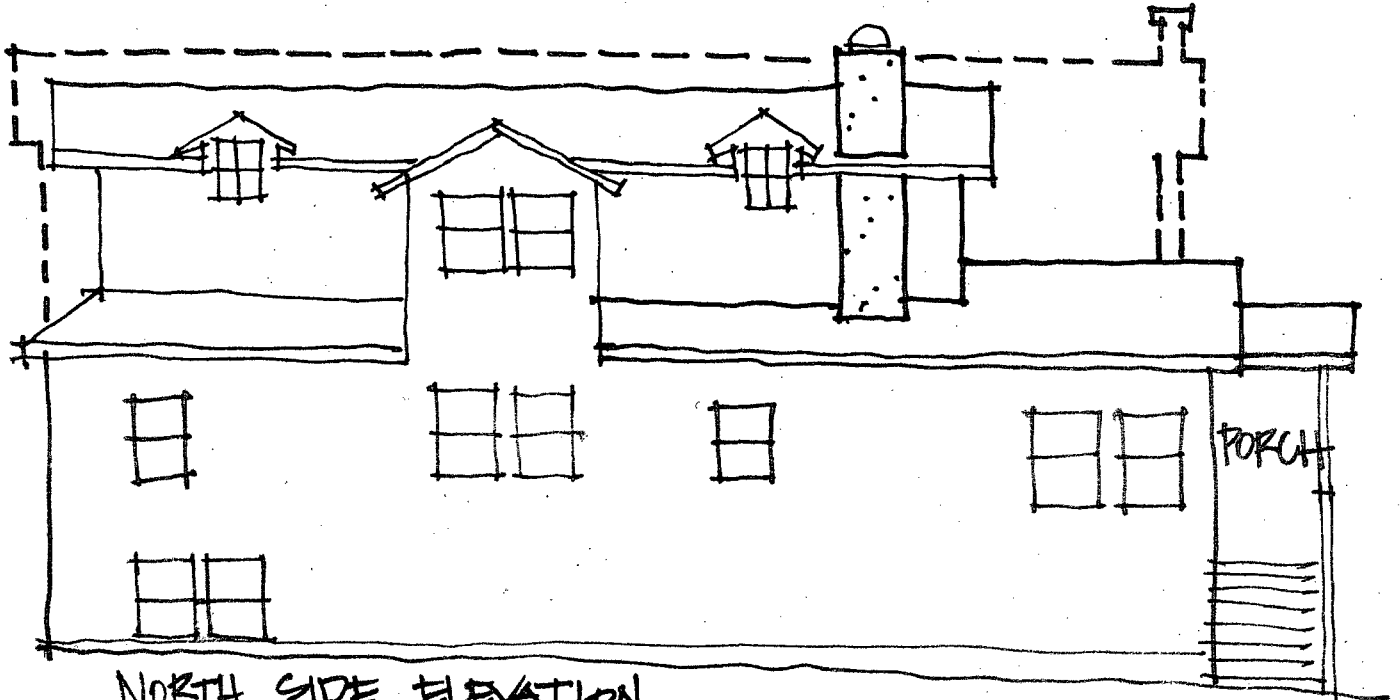




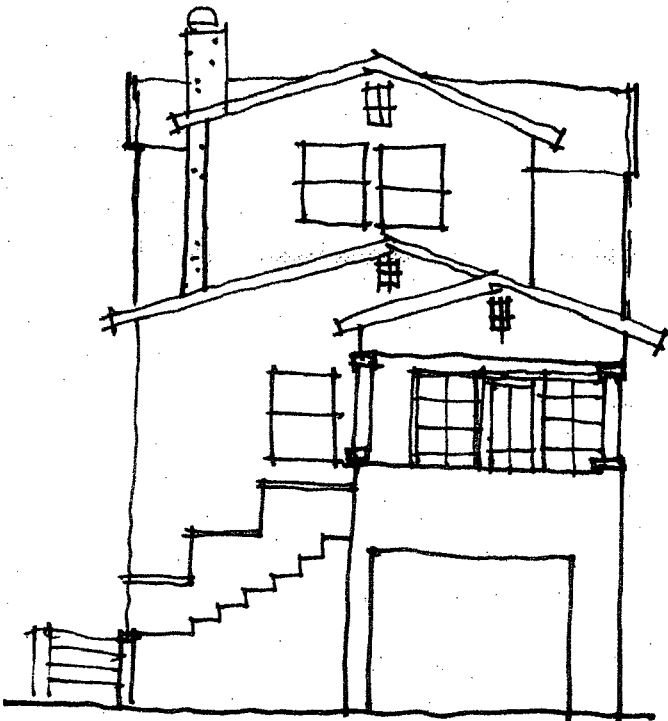


0.1 4 8 16

March 21st 2 hours before sunset

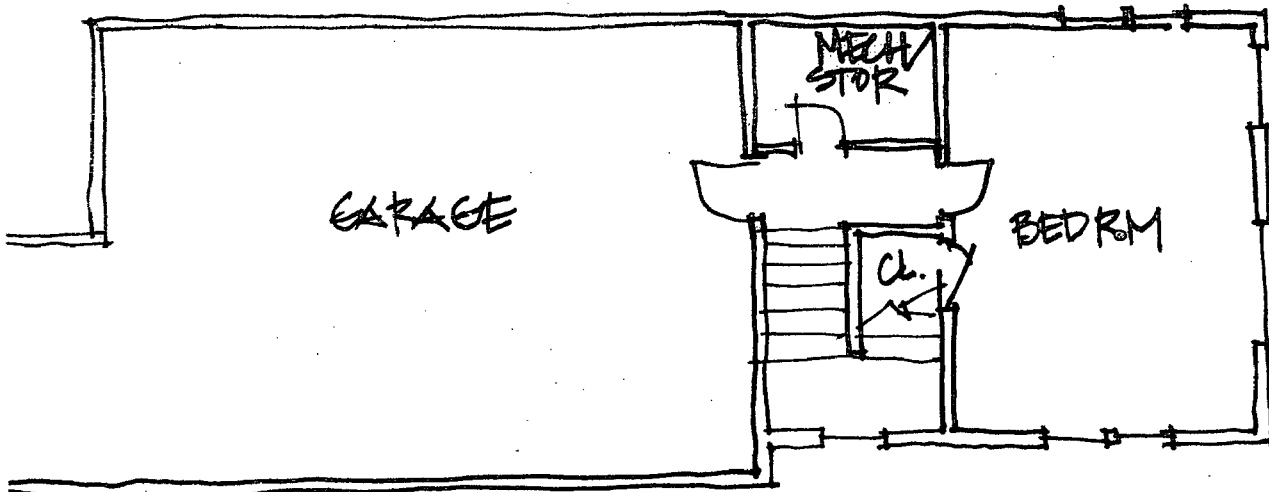


NORTH SIDE ELEVATION

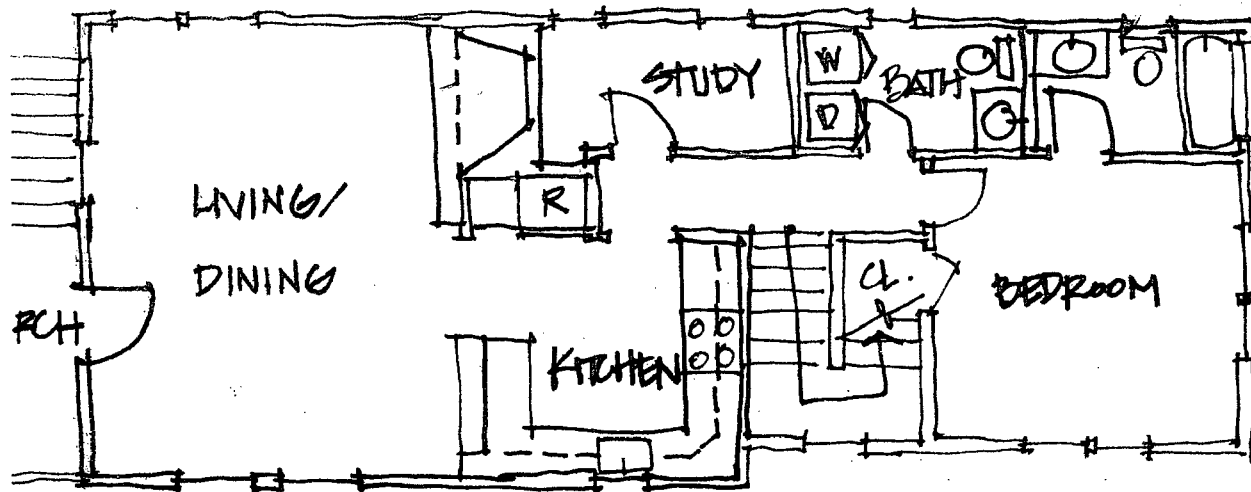


FRONT ELEVATION

1223 KANG AVENUE



GROUND LEVEL
 1323 KAINS AVENUE
 10.18.05



FIRST FLOOR

